



NEW

SPECIALTY SHOES FOR DIABETICS  
COLLECTION 2017

[www.nm4y.com](http://www.nm4y.com)



*Passionate  
about your  
feet.*



*It is time to move forward – and the best way  
of doing this is with our new collection  
of specialty shoes!*

---

In this brochure you will find a selection of **19 brand new trendy ladies models** – all developed over our ladies last N180K – and specially designed and developed for the treatment of the diabetic foot.

Out of these 19 models you will find 15 models which are equipped with our newest sportive (sneaker styled) PU outsole. Four models are equipped with a light-weight EVA outsole. Both types of outsoles are easy to adapt.

Next to that – you will also find **4 men's styles** in this catalogue.

---

### **Characteristics of this new collection:**

- All models are produced using our approved ladies last N180K and men's last N39K: nature shaped front part providing sufficient space for toes – narrow heel part providing a perfect fitting which avoids heel slippage.
- All models are produced with "Xsensible Inside Stretch Leather" – this provides greater flexibility to accommodate for changes in foot volume, eg oedema or prominent bunions.
- Linings are made of synthetic material – especially for diabetic patients – soft, comfortable and durable.
- Shoes accommodate 2 inlays: a 5mm cork insole and a 5mm cork-leather insole - both are removable and maximum depth for individual insoles is 10mm.
- Additional reinforced insoles can be supplied with the shoes as well.
- All shoes are available in UK ladies sizes 3-9 and men sizes 6-12. (including ½ sizes)
- Outsoles: sportive PU outsoles and light weight EVA. Both easy to adapt.



## 7004 Ilse Lace

Size: 3 – 9 (UK) | Last: N18oK | Outsole: PU Sport



Art. 70054.2.414

- Taupe leather with taupe stretch silky leather



Art. 70054.2.801

- Grey Fantasy leather with grey stretch silky leather



Art. 70054.3.001

- Black Fantasy leather with black stretch leather



Art. 70054.2.417

- Taupe Fantasy leather with taupe stretch silky leather

## 7006 Irma Lace

Size: 3 – 9 (UK) | Last: N18oK | Outsole: PU Sport



Art. 70056.2.430

● Sand nubuk/leather with sand stretch silky leather



Art. 70056.4.001

● Black nappa/suede/patent with black stretch suede



Art. 70056.3.101

○ White nappa leather with white stretch leather

## 7104 Iris

Size: 3 – 9 (UK) | Last: N18oK | Outsole: PU Sport



Art. 70058.2.414

● Taupe leather with taupe stretch silky leather



Art. 70058.2.430

● Sand leather with sand stretch silky leather



## 7102 Ilke Velcro

Size: 3 – 9 (UK) | Last: N180K | Outsole: PU Sport



Art. 70057.2.430

● Sand leather with sand stretch silky leather



Art. 70057.2.417

● Taupe Fantasy leather with taupe stretch silky leather



Art. 70057.2.001

● Black leather with black stretch silky leather

## 7000 Ingrid Velcro

Size: 3 – 9 (UK) | Last: N180K | Outsole: PU Sport / EVA

Art. 70053.2.001

- Black leather with black stretch silky leather  
Outsole: PU Sport



Art. 70053.2.830

- Anthracite nappa leather with anthracite stretch silky-leather  
Outsole : EVA





## 7102 Polish Velcro

Size: 3 – 9 (UK) | Last: N18oK | Outsole: EVA



Art. 70037.4.001

● Black leather with black stretch suede



Art. 70037.4.501

● Taupe leather with taupe stretch suede

## 7001 Carmen Lace

Size: 3 – 9 (UK) | Last: N18oK | Outsole: EVA



Art. 70052.2.001

● Black leather/patent with black stretch silky-leather

## 7201 Isa

Size: 3 – 9 (UK) | Last: N18oK | Outsole: PU Sport



Art. 70059.2.002

● Black Fantasy leather with black stretch silky-leather

## 7203 Claudia Lace *(lateral zipper)*

Size: 3 – 9 (UK) | Last: N18oK | Outsole: PU Sport



Art. 70055.2.001

● Black nubuk with black stretch silky-leather







## 7501 Orlando Lace

Size: 6 – 12 (UK) | Last: N39K | Outsole: PU



Art. 70048.3.001

● Black leather with black stretch leather

## 7501 Orlando Velcro

Size: 6 – 12 (UK) | Last: N39K | Outsole: PU



Art. 70049.3.001

● Black leather with black stretch leather



## 7508 Stone Velcro

Size: 6 – 12 (UK) | Last: N39K | Outsole: PU

Art. 70041.2.301

● Brown leather with brown stretch suede



## 7600 Tough Velcro

Size: 6 – 12 (UK) | Last: N39K | Outsole: PU

Art. 70047.2.001

● Black leather with black stretch silky-leather



# NIMCO Made4You Specialty Shoes for Diabetics

**Nimco Made4You produces and sells footwear in different versions and for multiple indications. Our goal is to maintain the health and wellbeing of your feet. The manufacture of shoes with a perfect fit is an important tool to contribute to improved mobility and quality of life of the user of this type of footwear. An important prerequisite to achieve this is the link between our company, its employees and our customers!**

## **Nimco Made4You knows how!**

With more than one hundred years of experience, we are proud of the statement that we have significant experience in sales and production of shoes. Our sales department works with experienced and trained orthopaedic shoemakers; our factory - Nimco Portugal - located in the epicentre of the Portuguese footwear industry. We attach great importance to the training of our employees in order to guarantee our high quality standards.

Nimco Made4You Portugal is a APCER-certified company. The ISO 9001 quality certificate, ISO 14001 environmental certificate and ISO 18001 hygiene and occupational health and safety certificate are our standards. Our production is in accordance with the standard and conforms to the European directives. As a corporate group Nimco Made4You has been certified for years ISO 9001 and a leader in the development, production and shipping of orthopaedic and special shoes.

## **Specifications:**

- A wide and diverse range of models - all models are stock items.
- Multiple widths - in addition to the widths K are also (as special order) other types of widths available.
- Perfect fit - all shoes are built on nature lasts. In the heel, we have adapted a narrower and slimmer rear foot to avoid the shape of the last to slip.
- Removable cork / leather footbed and a placeholder made of cork.
- Separate reinforced insoles available on request not permanently integrated in the shoe.
- Special diabetic lining material - breathable, washable and skin-friendly.
- Xsensible-Inside-stretch leather - for optimum comfort!
- Sufficient space for individual orthoses or insoles (10mm) - on request, the shoes can be equipped with extra room for insoles. (Custom-made)

## **Indications:**

Diabetic polyneuropathy with severe neuropathy and pronounced angiopathy (blood circulation problems), associated with existing or healed ulcers and / or other mechanical irritations that lead to regional pressure peaks.





## Reinforced insoles

When required you can order these reinforced insoles together with your selected shoes. These insoles are easy to adapt (thermo-mouldable) and come in a thickness of 2 mm. These reinforced insoles must be cemented on the innersole of the shoes by your orthopaedic technician.

Article No. 9112 — **for ladies** shoes

(sizes 3-9 , not in ½ sizes)

Article No. 9113 — **for men** shoes

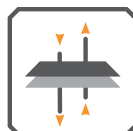
(sizes 6-12 , not in ½ sizes)



## Xsensible Inside Stretch Leather

### The advantages and characteristics:

- The technology ensures that the leather stretches 70% in width, but only 30% in length. Tests have shown that the leather returns to its original shape even after 50,000 steps repeatedly.
- The top layer is made of genuine leather and the bottom layers are made of Lycra constructed with a natural latex foam material therebetween.
- All footwear in this catalogue is equipped with this Xsensible-Inside-stretch leather technology is extremely stretchable and adapt individually to your foot.
- Xsensible-Inside Stretch leather has the special property that the material is breathable and provides an optimal foot climate.



BREATHABLE



WATER-REPELLENT



LIGHTWEIGHT

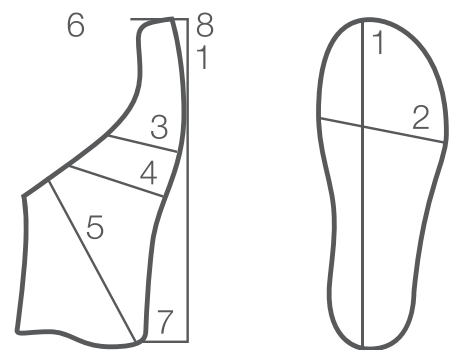
## Measurement Chart Ladies Last N180k

Size	1	2	3	4	5	6	7	8
3	235,1	88,1	224,8	228,3	304,8	20,7	23,8	15,7
3½	239,3	89,2	228,0	231,5	309,9	21,1	24,1	15,9
4	243,5	90,2	231,2	234,7	314,9	21,4	24,4	16,1
4½	247,8	91,3	234,3	237,8	320,0	21,7	24,7	16,3
5	252,0	92,3	237,5	241,0	325,0	22,0	25,0	16,5
5½	256,2	93,4	240,7	244,2	330,1	22,3	25,3	16,7
6	260,5	94,5	243,9	247,4	335,1	22,6	25,6	16,9
6½	264,7	95,5	247,0	250,5	340,2	22,9	25,9	17,1
7	268,9	96,6	250,2	253,7	345,2	23,3	26,2	17,3
7½	273,2	97,6	253,4	256,9	350,3	23,6	26,5	17,5
8	277,4	98,7	256,6	260,1	355,3	23,9	26,8	17,7
8½	281,6	99,8	259,7	263,2	360,4	24,2	27,1	17,9
9	285,8	100,8	262,9	266,4	365,4	24,5	27,5	18,1

Individual insoles are not included in this chart!

Add additional 20mm on positions 3,4 and 5 for total volume.

All dimensions are  
“net” - without the  
inlay inserted into  
the shoes



- 1 Length of insole
- 2 Joint width
- 3 Joint circumference
- 4 Cone
- 5 Instep circumference
- 6 Toe box depth
- 7 Heel height
- 8 Toe-spring

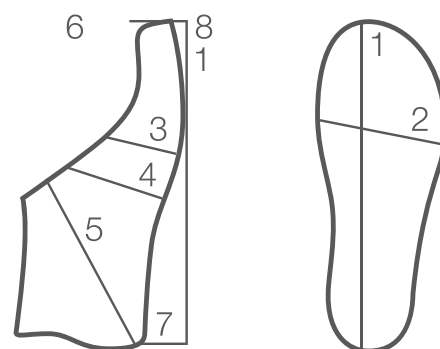
## Measurement Chart Men's Last N39 K

Size	1	2	3	4	5	6	7	8
6	262,6	99,3	240,8	246,8	344,8	23,7	23,8	9,8
6½	266,8	100,3	244,0	250,0	349,9	24,1	24,1	9,9
7	271,0	101,4	247,2	253,2	354,9	24,4	24,4	10,1
7½	275,3	102,4	250,3	256,3	360,0	24,7	24,7	10,2
8	279,5	103,5	253,5	259,5	365,0	25,0	25,0	10,3
8½	283,7	104,6	256,7	262,7	370,1	25,3	25,3	10,4
9	288,0	105,6	259,9	265,9	375,1	25,6	25,6	10,5
9½	292,2	106,7	263,0	269,0	380,2	25,9	25,9	10,7
10	296,4	107,7	266,2	272,2	385,2	26,3	26,2	10,8
10½	300,7	108,8	269,4	275,4	390,3	26,6	26,5	10,9
11	304,9	109,9	272,6	278,6	395,3	26,9	26,8	11,0
11½	309,1	110,9	275,7	281,8	400,4	27,2	27,1	11,1
12	313,3	112,0	278,9	285,0	405,4	27,5	27,4	11,2

Individual insoles are not included in this chart!

Add additional 20mm on positions 3,4 and 5 for total volume.

All dimensions are  
“net” - without the  
inlay inserted into  
the shoes



- 1 Length of insole
- 2 Joint width
- 3 Joint circumference
- 4 Cone
- 5 Instep circumference
- 6 Toe box depth
- 7 Heel height
- 8 Toe-spring





**WWW.NM4Y.COM**

Customer Service

+31 (0)24 684 80 90

**Nimco Made4You, B.V.**

PO Box 1361 | 6501 BJ Nijmegen | The Netherlands

Landgoed "De Wijchert" | Oude Kleefsebaan, 119

6572 AK Berg en Dal | The Netherlands

Tel.: +31 (0)24 684 80 90 | Fax.: +31 (0)24 684 35 85

Email: [sales@nm4y.com](mailto:sales@nm4y.com)

**Medizinproduktberater:**

Herr O.J.A. Toornend (OSM) Herr F.H.T. Kruitwagen

Email: [f.kruitwagen@nm4y.com](mailto:f.kruitwagen@nm4y.com)

NM4Y is a registered trademark. © All rights reserved

